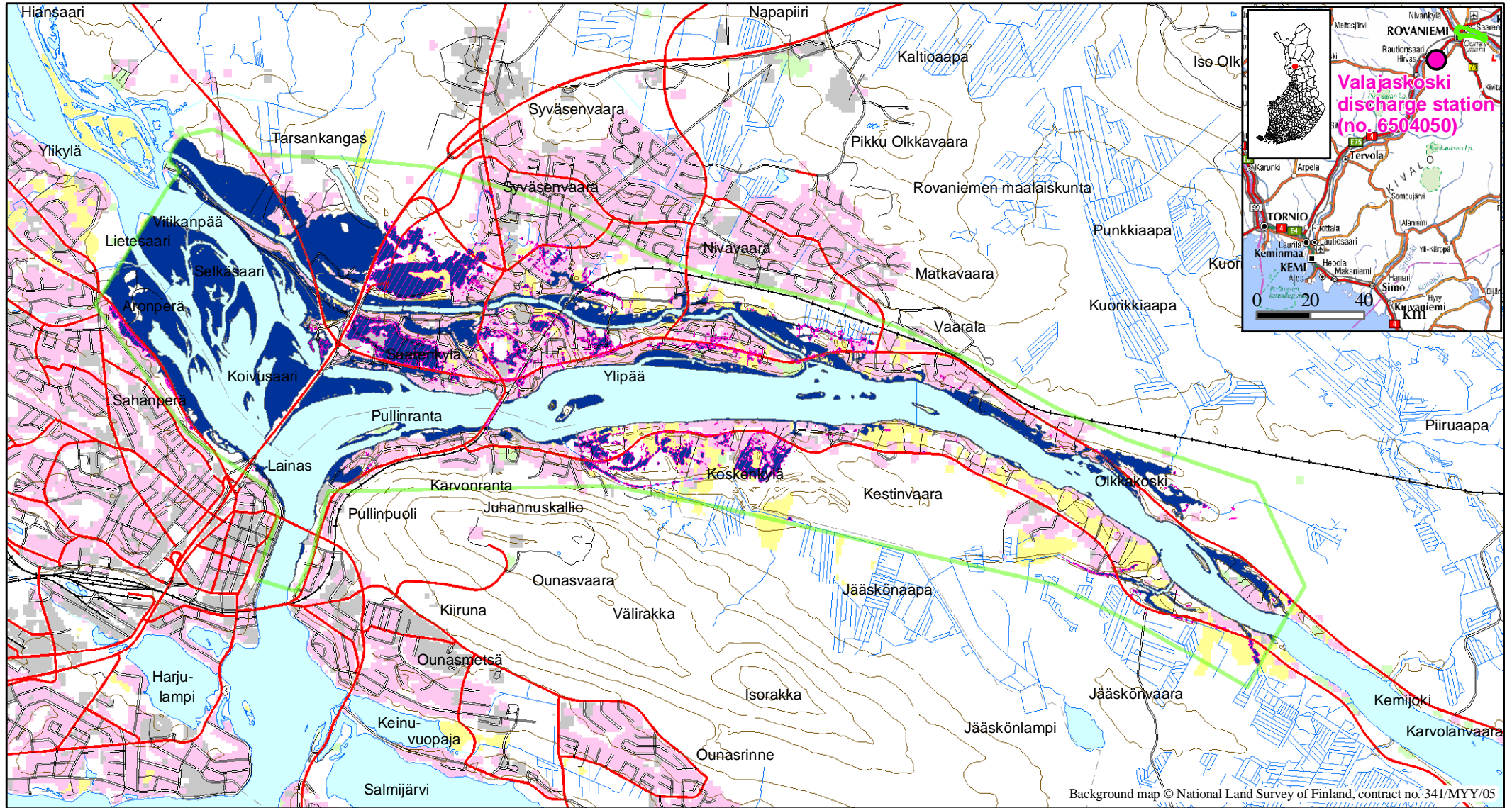


Flood hazard map of Rovaniemi (a modeled scenario: discharge 4400 m³/s)



0 1 2 km



Scale - 1:50 000



- Boundary of the modeled area
- Modeled flood extent (4400 m³/s)
- Insulated areas (4400 m³/s)
- Ground elevation lines (interval 20 m)
- Urban fabric
- Industrial and commercial units
- Agricultural areas

Location:	Municipality of Rovaniemi, Saarenkyliä	Discharge value:	4400 m ³ /s
Frequency:	a 50-year flood	Discharge station:	Valajaskoski, station no. 6504050
Type:	Modeled	Discharge calculation:	Statistical analysis
Accuracy:	Detailed	Elevation system:	N60
Scale (max.):	1:50 000	Water level value:	
Topographic information:	Municipality of Rovaniemi	Water level station:	
Accuracy of topography:	~ +/- 0,3 m	Water level calculation:	1D-hydraulic model

Background map © National Land Survey of Finland, contract no. 341/MYY/05