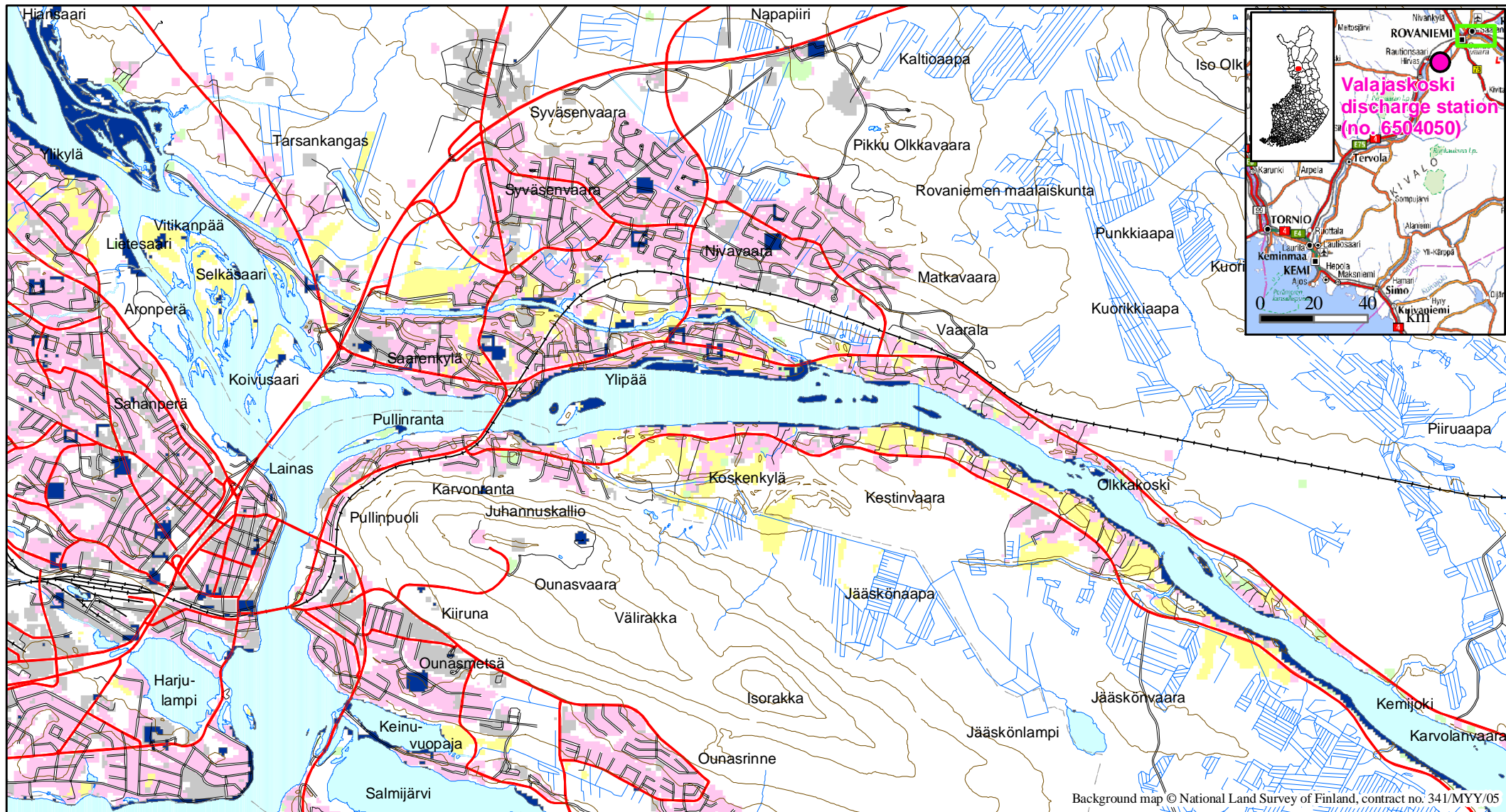
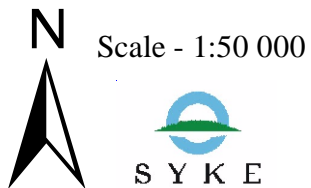


Flood hazard map of Rovaniemi (an observed flood extent 1995-30-05)



0 1 2 km



- Derived flood extent (1995/05/30)
- Ground elevation lines (interval 20 m)
- Urban fabric
- Industrial and commercial units
- Agricultural areas

Location:	Municipality of Rovaniemi, Saarenkyliä	Discharge value:	3725 m ³ /s
Date and time:	1995-05-30	Discharge station:	Valajaskoski, st. no. 6504050
Frequency:	a 12-year flood	Discharge calculation:	Observed
Type:	Derived from satellite image	Elevation system:	
Scale (max.):	1:50 000	Water level value:	
Remote sensed data:	ERS2 SAR satellite image	Water level station:	
Spatial accuracy:	25 m	Water level calculation:	